

Salina, Kansas

23rd Annual Sale

Mid-K

SHORTHORNS

Travel Far...

TUESDAY,  
APRIL 1, 1958





# SHOW CLASSIFICATION

SHOW at 9:00 A.M. – TUESDAY, APRIL 1, 1958  
Saline County Fairgrounds

For the purpose of this show, the cattle have been divided into groups according to age and sex.

Judge – James G. Tomson, Jr., Wakarusa, Kansas

CLASS I – Bulls calved before January 1, 1955  
Lots 1 and 2 inclusive  
AWARDS

CLASS II – Bulls calved in 1955  
Lots 3, 4 and 5  
AWARDS

CLASS III – Bulls calved between January 1 and October 5, 1956  
Lots 6 to 14 inclusive  
AWARDS

CLASS IV – Bulls calved after October 5 in 1956  
Lots 15 to 23 inclusive  
AWARDS

CLASS V – Bulls calved in 1957  
Lots 24 to 32 inclusive  
AWARDS

CHAMPION BULL

RESERVE CHAMPION BULL

CLASS VI – Females calved before January 1, 1956  
Lots 33 and 34  
AWARDS

CLASS V – Females calved in 1956  
Lots 35 to 42 inclusive  
AWARDS

CLASS VI – Females calved between January 1 and July 1, 1957  
Lots 43 to 50 inclusive  
AWARDS

CLASS VIII – Females calved after July 1, in 1957  
Lots 51 to 59 inclusive  
AWARDS

CHAMPION FEMALE

RESERVE CHAMPION FEMALE

CHAMPION PAIR AWARD

AN OUTSTANDING GROUP OF HERD BULL PROSPECTS  
AND FOUNDATION FEMALES WILL FEATURE THE

## MID-KANSAS Shorthorn Breeders 23rd Annual Sale

**TUESDAY, APRIL 1, 1958**

**SALINA, KANSAS**

SALINE COUNTY FAIRGROUNDS

SHOW AT 9:00 A.M.

SALE AT 12:30 P.M.

Judge – James G. Tomson, Jr., Wakarusa, Kansas

Auctioneer – C. D. Swaffar, Tulsa, Oklahoma

**32 Bulls**

**27 Females**

*If it is an outstanding bull you want, or a top bred or open heifer, come to SALINA where the top herds in the state will be represented.*

There will be sons and daughters of these outstanding herd bulls **WL Bank Standard 17th**, by the International grand champion N-Bar Prince; **Empire Golden Fame**, the Missouri and Nebraska State Fairs grand champion bull; **Loyal Leader**, the \$3,000 son of Edwin Royal Leader; **Edellyn Braemar** by Beaufort Bulldozer; **Kickapoo Fort Command**, 1954 Illinois reserve grand champion; **Sni-A-Bar Jolly Tar**; **Crieffvechter James**; **Springdale Victory 2d** by the \$4,000 Congress champion Hillcroft F Victory; **Sultan**, grandson of the \$10,000 Prince Royal; **Memory's Leader** by Rannoch Memory; **Arcadia Sportsman 2d** by Calrossie Sportsman; **Clipper Max**, the Mid-Kansas grand champion; **Brawith Leader** by Edwin Royal Leader; **WF Impression 31st** by Woodhead First Impression; **Sni-A-Bar Ransom Mercury**; **Rannoch Memory**; **Gregg Farms Welcome**; **Shore Acres Admiral**; and **HVF Dandy 3rd**.

Everyone is invited to attend the banquet to be held at 7:00 P.M., March 31, the evening before the sale, in the Casa Bonita Cafe. Hotel Lamer, Sale Headquarters.

Sponsored by –

MID-KANSAS SHORTHORN BREEDERS' ASSOCIATION

Sales Manager –

MERVIN F. AEGERTER, SEWARD, NEBRASKA



# MID-KANSAS Shorthorn Breeders 23rd Annual Sale

## GENERAL INFORMATION

**LOCATION** – The show and sale will be held in the arena at the judging pavilion at the Saline County Fair Grounds at Salina, Kansas, on Tuesday, April 1, 1958. The headquarters for the sale manager and the consignors will be the Lamer Hotel, Salina, Kansas. Telephone at Fair Grounds, TA 3-9932.

**TERMS** – The terms of the sale are cash unless other arrangements are made in advance with the consignor from whom you purchase. Settlements are to be made with the clerk of the sale immediately at the conclusion of the auction. All stock will be at buyer's risk as soon as bid off but the management will attend to loading on cars or trucks in compliance with instructions from purchasers.

**GUARANTEE** – All cattle will be sold under the guarantee of the American Shorthorn Breeders' Association.

The above guarantee and terms shall constitute a contract between consignor and buyer of each lot. Neither the sale manager nor the clerk of the sale assumes any liability, legal or otherwise.

A certificate of registry and a signed transfer will be furnished for each lot sold and an application for registry will be furnished for each calf sold at foot and for each unborn calf sold in dam.

Where footnotes appear in this catalog, they were furnished by the consignors or written from information supplied by the consignors.

We shall not be responsible for any accidents that may occur but we shall make every effort to provide for the safety and comfort of our guests.

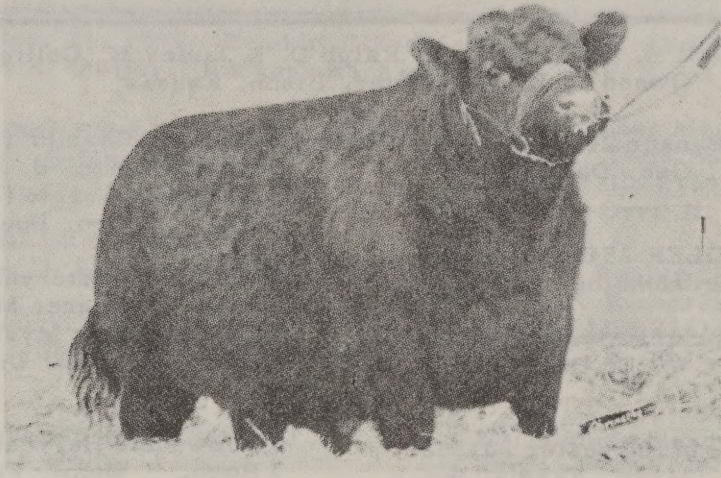
**BIDS** – Those wishing to buy, who cannot be present, may leave with or send their bids to the sale manager, Mervin F. Aegerter of The Shorthorn World; to Kenneth Fulk or Ted Aegerter of American Shorthorn Breeders' Association, Chicago, Illinois; to the auctioneer, C. D. Swaffar, Tulsa, Oklahoma; or to the press representatives, Jim Orton, Kansas Stockman; Mike Wilson, Kansas Farmer, Topeka, Kansas; Wally Gladish, Drovers Telegram; Lot Taylor, Sec'y, Kansas Shorthorn Breeders' Association, Manhattan, Kansas, or John Schlender, Saline County Agent, Salina, Kansas.

### – PLEASE NOTE –

Any late mail or messages can be addressed to Mervin F. Aegerter, Sale Manager, c/o Lamer Hotel, Salina, Kansas. These should be marked: "Hold for Arrival."

**HOTEL RESERVATIONS** – Should be made through J. M. Cranor, Chamber of Commerce, Salina, Kansas.





**ELCONA ROBIN STANDARD**

**Lot 1 Bull      ELCONA ROBIN STANDARD 2829-289      LE 462      Dooley**

Red, calved Sept. 29, 1954. Bred by Mr. and Mrs. Ernest M. Sims, Elkhart, Indiana. Owned by Webb Dooley, Topeka, Kansas.

▶ N-Bar Prince 2575100  
Red, W. J. Nixon

***Sire***

W L BANK STANDARD 2657683  
Roan, W. C. Anderson & Son

▶ Maxine Beauty 2541929  
Dk.Rn., Henry Fisher

▶ Hickory Knoll's Ransom 2142714  
Roan, W. A. Dryden & Son

***Dam***

HILAND CRIMSON MAY 2334062  
Red, Blotz Bros.

▶ Crimson May 7th 2074578  
Red, Blotz Bros.

┌ Lakeside Champion 4th 2379485  
Red, H. E. Brown, Est.  
Meadow Queen 2d 2378974  
Roan, W. J. Nixon

┌ Killearn Max Stamp 2504441  
Red, Claude Gallinger  
Wheatland Beauty 14th 2214282  
Roan, C. J. Broughton

┌ O A C Ransom 23d -239526-  
Red, Ont. Agr'l College  
Lancaster Blossom 2110123  
Roan, W. A. Dryden & Son

┌ Glenburn Brigadier 1837123  
Roan, F. H. Deacon  
Crimson May 3d 1785176  
Roan, Blotz Bros.

ELCONA ROBIN STANDARD --This bull was used as an Elcona Junior Herdsire. His dam ranks close to the top in Elcon'a galaxy of star producers. One daughter sold to W. H. Kilcawley for \$1125 and a son was bought by Herman Carus at the 1954 International for \$1675.



# MID-KANSAS Shorthorn Breeders 23rd Annual Sale

Lot 2 Bull

ECHO VALLEY ACE 2734-423

RE 252

Richter

Roan, calved Oct. 4, 1952. Bred by Ralph D. & James M. Collier, Alta Vista, Kansas. Owned by E. F. Richter, Bison, Kansas.

- ▶ Mount Banker 2451108  
Dk.Rn., Geo. Douglas

## Sire

KELBURN BUGLER 2546511  
Dk.Rn., Richardson Stock Farms

- ▶ Crieffvechter Mysie 46th 2546512  
Red, W. D. Dron

- ▶ Maxwalton Harvester 2035827  
Roan, Maxw. Farms, Inc.

## Dam

CRIMSON BELLE 2d 2563608  
Red, R. M. Collier & Son

- ▶ Princess Crimson M 2364873  
Red, R. M. Collier & Son

Scotston Cashier (322537)  
White, Wm. B. Robertson  
Lavender Luggie (247571)  
Red, Geo. Douglas

Millhills Yesteryear (316830)  
Red, Duncan M. Stewart  
Crieffvechter Mysie 23d (197158)  
Red, W. D. Dron

Browndale Harvester 2035827  
Roan, Maxw. Farms, Inc.  
Kinellar Broadhooks 3d 1996986  
Roan, Duncan Campbell

Sni-A-Bar Gladiator 2084369  
Red, Sni-A-Bar Farms  
Princess Crimson 2056902  
Roan, R. M. Collier & Son

ECHO VALLEY ACE -- a proven son of the \$3,000 Kelburn Bugler and out of a dam by the Ohio junior champion, Maxwalton Harvester.

Lot 3 Bull

MERCURY'S PREMIER 2905-711 RE S127

Stoffer

Red, calved Nov. 18, 1955. Bred by Clarence H. Ralstin, Mullinville, Kansas. Owned by Earl E. Stoffer, Olsburg, Kansas.

- ▶ Sni-A-Bar Random Mercury 2288967  
Roan, Sni-A-Bar Farms

## Sire

RANDOM MERCURY 2769564  
Red, Ralph D. & James M. Collier

- ▶ E V Juanita B 2648851  
Red, Ralph D. & James M. Collier

- ▶ Sunnyvale Mercury 2495863  
Red, Walter A. Hunt

## Dam

ROYAL MYSIE 15th 2749213  
Dk.Rn., Clarence H. Ralstin

- ▶ Royal Mysie 10th 2561432  
Red, Clarence H. Ralstin

Ed. Campeon Merc. 2071109  
White, Thos. E. Wilson  
Secret Belle 2110133  
Roan, Cyril H. Mumford

Kelburn Bugler 2546511  
Dk.Rn., Richardson Stock Farms  
Juanita 11th 2351514  
Red, R. M. Collier & Son

Ed. Melody Merc. 2112051  
Red, Thos. E. Wilson  
Sunnyvale Augusta 1931862  
Roan, Walter A. Hunt

Prince William 12th 2326578  
Roan, Ben G. Studer  
Royal Mysie 7th 2421112  
Roan, Clarence H. Ralstin

MERCURY'S PREMIER -- we have used this bull in our herd and he will just sell in strong breeding condition but ready to go to work and do a real job for someone.



# SALINA, KANSAS • TUESDAY, APRIL 1, 1958

Lot 4 Bull

MERCURY'S CLIPPER 2905-709

RE S124

Stoffer

Red, calved Nov. 21, 1955. Bred by Clarence H. Ralstin, Mullinville, Kans. Owned by Earl E. Stoffer, Olsburg, Kansas.

- ▶ Sni-A-Bar Random Mercury 2288967  
Roan, Sni-A-Bar Farms

## Sire

RANDOM MERCURY 2769564

Red, Ralph D. & James Collier

- ▶ E V Juanita B 2648851  
Red, Ralph B. & James Collier

- ▶ Sunnyvale Mercury 2495863  
Red, Walter A. Hunt

## Dam

ROYAL CLIPPER LADY 3d 2749205

Dk.Rn., Clarence H. Ralstin

- ▶ Royal Clipper Lady 2d 2200389  
Red, Clarence H. Ralstin

{ Ed. Campeon Merc. 2071109  
White, Thos. E. Wilson  
Secret Belle 2110133  
Roan, Cyril H. Mumford

{ Kelburn Bugler 2546511  
Dk.Rn., Richardson Stock Farms  
Juanita 11th 2351514  
Red, R. M. Collier & Son

{ Ed. Melody Merc. 2112051  
Red, Thos. E. Wilson  
Sunnyvale Augusta 1931862  
Roan, Walter A. Hunt

{ Divide Gold Porter 2051562  
Roan, The Allen Cattle Co.  
Royal Lady 1935603  
Roan, Clarence H. Ralstin

MERCURY'S CLIPPER -- we have used this bull heavily and he won't be fitted as high as he should be but we think he is of herd bull calibre and will be in top breeding condition. Random Mercury is a half-brother to the \$10,000 Mercury's Jasper 2d. E V Juanita B was a Kansas State Sale champion female.

Lot 5 Bull

CLEARVIEW COMMODORE 2883-567

LE LS55

RE 70

Schmitz

Roan, calved Dec. 16, 1955. Bred and owned by Leo Schmitz, Marysville, Kansas.

- ▶ Cor. Fort Augustus 2553334  
Red, J. M. Grigor, Esq.

## Sire

KICKAPOO FORT COMMAND 2771758

Dk.Rn., Stanley G. Harris

- ▶ Aberfeldy Fairy 2601452  
Roan, Reford W. Gardhouse

- ▶ Divide Esquire 2489888  
Red, The Allen Cattle Co.

## Dam

CLEARVIEW SHOWGIRL 2d 2704799

Roan, Leo Schmitz

- ▶ Showgirl 2575110  
Roan, Leo Schmitz

{ Mag. Commodore (304906)  
Red, H. C. Robinson  
Mabel 40th (262910)  
Dk.Rn., R.S. McWilliam

{ Crichton Drambuie 2552962  
Red, R. H. Watherston  
Kair Fairy 2580068  
Roan, G.J.C. Anderson

{ Divide Prince Peter 2190527  
Roan, Miles of View Farms  
Div. Belle Archer 31st 2071591  
Roan, The Allen Cattle Co.

{ Guardsman 2300513  
Red, Thos. Andrews  
Duchess of Gloster 55th 2400508  
Roan, Wm. Tegeler

CLEARVIEW COMMODORE -- He's big and ready to go to work for you. By the 1954 Illinois State Sale Reserve Champion and out of one of the best cows in our herd. T. B. Accredited herd number 550104.



# MID-KANSAS Shorthorn Breeders 23rd Annual Sale

Lot 6 Bull

EMPIRE GOLDEN MACK 2882-910

RE M9

Tittel

Red, calved Feb. 20, 1956. Bred by Sam Tittel, Bazine, Kansas. Owned by Sam Tittel, Bazine, Kansas.

- ▶ Parkdale Golden Fame 10th 2387077  
Red, Bellows Bros.

## Sire

EMPIRE GOLDEN FAME 21st 2633037  
Dk.Rn., Leroy Bashor

- ▶ Village Mist 26th 2527845  
Dk.Rn., Thos. J. Underwood

- ▶ Divide Olympic 2117652  
Roan, The Allen Cattle Co.

## Dam

JOAN 34th 2502036  
Roan, E. C. Lacy

- ▶ Joan 5th 1984377  
Roan, E. C. Lacy

Helfred Golden Fame 2214653  
Red, F. W. Hubbell  
Queen of Beauty 97th 2093669  
Roan, Bellows Bros.

Clara's Goldfinder 2327735  
Red, R. J. Egger  
Village Mist 25th 2398270  
Roan, W. F. Barber & Sons

Duke of Killearn 1919448  
Roan, Claude Gallinger  
Div. Starlight 33d 1904282  
Roan, The Allen Cattle Co.

Gregg Farms Victorious 1712529  
Red, D. M. Gregg  
Joan 1403779  
White, W. J. & O. B. Burtis

EMPIRE GOLDEN MACK -- here is a two-year-old son of the grand champion bull at the Missouri State Fair in 1952 and reserve at the Nebraska State Fair. We think he is a tough prospect.

Lot 7 Bull

E V TRIUMPH 2913-050

RE 649

Collier

Dark Roan, calved May 6, 1956. Bred and owned by Ralph D. & James M. Collier, Alta Vista, Kansas.

- ▶ Erimus Dandy 2598413  
Red, R.S. deQ. Quincey

## Sire

H V F DANDY 3d 2700623  
Red, D. W. Bishop

- ▶ M F Floss 3d 2501983  
Red, W. J. Russell

- ▶ Divide Alert 2207761  
Red, The Allen Cattle Co.

## Dam

E V COUNTESS IDEAL 2648847  
Roan, Ralph D. & James M. Collier

- ▶ Countess Ideal 2116258  
Red, T. J. Sands

Ballathie Command (342592)  
Red, S. J. L. Hardie  
Aldsworth Pattie (259837)  
Red, Wm. Garne

Calrossie Formula 2536602  
Red, J. & D.P. MacGillivray  
Klaymor Floss 4th 2447585  
Red, W. J. Russell

Duke of Killearn 1919448  
Roan, Claude Gallinger  
Div. Bridal Blossom 2d 1718856  
Roan, The Allen Cattle Co.

Browndale Ideal 2005726  
Red, Merryvale Farm  
Camrose Countess 1889589  
Red, T. J. Sands

E V TRIUMPH -- Thick and soggy. Right on the ground. Ready for service. Half-brothers to this bull won two classes at the State Show and Sale last fall.



# SALINA, KANSAS • TUESDAY, APRIL 1, 1958

Lot 8 Bull

ASHLO RECRUIT 3d 2902-666 RE 524

McIlrath

Roan, calved May 17, 1956. Bred and owned by McIlrath Bros., Kingman, Kans.

- ▶ Ed. Campeon Merc. 2071109  
White, Thos. E. Wilson

## Sire

SNI-A-BAR JOLLY TAR 2388883  
Roan, Sni-A-Bar Farms

- ▶ Augusta Cosmea 2341744  
Roan, A. J. Marshall

- ▶ Consul Sensation 2230101  
Roan, W. A. Dryden & Son

## Dam

MINA 38th 2524993  
Dk.Rn., McIlrath Bros.

- ▶ Mina 12th 1829034  
Roan, McIlrath Bros.

- ◀ Calrossie Mercury 1957318  
White, John MacGillivray  
◀ Collynie Princess 51st 1773024  
Roan, Duthie Webster

- ◀ Cruggleton Air Chief (315397)  
Red, A. J. Marshall  
◀ Augusta Charm (210545)  
Roan, A. J. Marshall

- ◀ Calrossie Vice Consul 2110110  
Red, J. MacGillivray  
◀ Blythesome 59th -286642-  
White, W. A. Dryden

- ◀ Maxw. Lamdash 1315898  
Roan, Carpenter & Ross  
◀ Mina 8th 1212986  
Red, Tomson Bros.

ASHLO RECRUIT 3d -- here is a big, roan, coming two-year-old son of Sni-A-Bar Jolly Tar that can get the job done for somebody.

Lot 9 Bull

COLLEGE LEADER 2912-042 RE 10

Crockett

Red, calved May 26, 1956. Bred and owned by Floyd Crockett, Lewis, Kansas.

- ▶ Edwin Royal Leader 2417007  
Roan, S. A. Donahoe

## Sire

BRAWITH LEADER 2644438  
Red, McCone Bros.

- ▶ Duchess of Gloster 6th 2218963  
Red, McCone Bros.

- ▶ College Premier 3d 2145231  
Red, Kansas State College

## Dam

RED RUTH 2d 2475425  
Red, Robt. J. Crockett

- ▶ Roan Ruth 2054423  
Roan, Robt. J. Crockett

- ◀ Ed. Royal Leader 19th 2247148  
Red, Thos. E. Wilson  
◀ Sunnyhill Silver Rose 7th 2231224  
Roan, Wm. E. Parker & Sons

- ◀ Brawith Emperor 2069696  
Roan, Carl L. Retzlaff  
◀ Duchess Perfection 1907924  
Red, E. C. Baker

- ◀ Wernacres Premier 1992779  
Red, H. L. Wernicke & Son  
◀ Ace's Narcissus 2d 2010293  
Red, Kans. St. College

- ◀ Ashbourne Fame 1882244  
Red, A. C. Shallenberger  
◀ Ruth of Willdon 1725852  
Red, W. C. Edwards, Jr.

COLLEGE LEADER -- dark red with a very good head. He is thick, deep and stands on four short legs. Out of our very best cow.



# MID-KANSAS Shorthorn Breeders 23rd Annual Sale

Lot 10 Bull

ROAN LEADER 5th 2892-611

RE 3-56

Crockett

Roan, calved June 5, 1956. Bred and owned by Robt. J. Crockett, Kinsley, Kansas.

- ▶ Edwin Royal Leader 2417007  
Roan, S. A. Donahoe

## Sire

BRAWITH LEADER 2644438  
Red, McCone Bros.

- ▶ Duchess of Gloster 6th 2218963  
Red, McCone Bros.

- ▶ Duke's Archer 2d 2386707  
Red, Wm. E. Thorne

## Dam

GLOSTER QUEEN 12th 2552148  
Red, Robt. J. Crockett

- ▶ Gloster Queen 10th 2389845  
Red, Robt. J. Crockett

Ed. Royal Ldr. 19th 2247148  
Red, Thos. E. Wilson  
Sunnyhill Silver Rose 7th 2231224  
Roan, Wm. E. Parker & Sons

Brawith Emperor 2069696  
Roan, Carl L. Retzlaff  
Duchess Perfection 1907924  
Red, E. C. Baker

Divide Olympic 2117652  
Roan, The Allen Cattle Co.  
Diamond Lily 2063254  
Red, Wm. E. Thorne

College Premier 3d 2145231  
Red, Kansas State College  
Gloster Queen 8th 2106263  
Red, R. L. Bach

ROAN LEADER 5th -- he stands on four short legs. Is very deep and thick like his sire. Should be a real bull. Look him over. He also has a good head. From our very best producing family.

Lot 11 Bull

CLEARVIEW LAFAYETTE 2932-977 LE LS56 RE 79

Schmitz

Red, calved Aug. 29, 1956. Bred and owned by Leo Schmitz, Marysville, Kans.

- ▶ Cor. Fort Augustus 2553334  
Red, J. M. Grigor, Esq.

## Sire

KICKAPOO FORT COMMAND 2771758  
Dk.Rn., Stanley G. Harris

- ▶ Aberfeldy Fairy 2601452  
Roan, Reford W. Gradhouse

- ▶ Marellbar Radiant 2616213  
Red, Wm. Bartholomay, Jr.

## Dam

CLEARVIEW LAVENDER LASS 2790833  
Roan, Leo Schmitz

- ▶ Princess Lavender 2623447  
Lt.Rn., Dwight H. Manning

Magheramorne Com. (304906)  
Red, H. C. Robinson  
Mabel 40th (262910)  
Dk.Rn., R. S. McWilliam

Crichton Drambuie 2552962  
Red, R. H. Watherston  
Kairie Fairy 2580068  
Roan, G.J.C. Anderson

Cruggleton Allardice 2486210  
Red, A. J. Marshall  
Rigfoot Orange Blossom 2555960  
Red, Good Will Farm

Miles Pride 2422257  
Dk.Rn., Bill Hacker  
Rosie 2d 2438067  
Lt.Rn., Dwight H. Manning

CLEARVIEW LAFAYETTE -- By the 1954 Illinois State Sale Reserve Champion, and out of a Marellbar Radiant dam. T. B. Accredited herd number 550104.



# SALINA, KANSAS • TUESDAY, APRIL 1, 1958

Lot 12 Bull

DIADEN LOYAL LEADER 8th 2936-564

LE 175

Elliott

Dark Roan, calved Sept. 24, 1956. Bred and owned by Dorsey Elliott, Sublette, Kansas.

- ▶ Edwin Royal Leader 2417007  
Roan, S. A. Donahoe

## Sire

LOYAL LEADER 2693781  
Red, Geo. Struve & Sons

- ▶ Roan Veronica 2420317  
Roan, Geo. Struve & Sons

- ▶ Missie's Mercury 2535961  
Red, R. L. Bach

## Dam

GLOSTER D 9 2610599  
Red, R. L. Bach

- ▶ Gloster D 2d 2051427  
Red, R. L. Bach

DIADEN LOYAL LEADER 8th -- a good, big, rugged, senior yearling son of the \$3,000 Loyal Leader.

- Ed. Royal Ldr. 19th 2247148  
Red, Thos. E. Wilson  
Sunnyhill Silver Rose 7th 2231224  
Roan, Wm. E. Parker & Sons

- Ed. Moray Mercury 2186575  
Red, Thos. E. Wilson  
Veronica of Helfred 4th 2251822  
Red, F. W. Hubbell

- Edellyn Medley Merc. 2263171  
Dk.Rn., Thos. E. Wilson  
Sni-A-Bar Missie 42d 2196775  
Roan, Sni-A-Bar Farms

- Sni-A-Bar Roan Rolox 1869563  
Roan, Sni-A-Bar Farms  
Gloster D 1917239  
Roan, R. L. Bach

Lot 13 Bull

MEDLEY VICTOR 2909-084

LE 187

Davidson

Red, calved Sept. 25, 1956. Bred and owned by E. W. Davidson, Americus, Kansas.

- ▶ Calrossie Sportsman 2596247  
Red, J. & D.P. MacGillivray

## Sire

ACADIA SPORTSMAN 2d 2655880  
Red, Cyrus S. Eaton

- ▶ Glenburn Lady Dorothy 3d 2546204  
Red, F. H. Deacon & Son

- ▶ Medley King 2610404  
Roan, R. L. Bach

## Dam

RADIANT VICTORIA 2d 2763299  
Red, E. W. Davidson

- ▶ Radiant Victoria 2610409  
Red, E. W. Davidson

MEDLEY VICTOR -- the reserve champion Shorthorn steer that Kansas State College was showing at Denver this year was sired by Acadia Sportsman 2d.

- Millhills Champion (346563)  
Red, Duncan M. Stewart  
Cal. Clipper Evangeline  
Red, J. & D.P. MacGillivray

- Robinwood Colonel -244412-  
Roan, Robinson Bros.  
Royal's Lady Dorothy -309262-  
Red, W. J. Harman

- W'head First Impression 2549785  
Dk.Rn., R. J. Henderson  
Lovely Queen 8th 2517094  
Roan, R. L. Bach

- Radiant Max 2457661  
Red, Tomson Bros.  
Sunnyvale Victoria 12th 2264942  
Red, Walter A. Hunt



# MID-KANSAS Shorthorn Breeders 23rd Annual Sale

Lot 14 Bull

SULTAN'S PRINCE 2901-934 RE I H 28

Hotchkiss

Red, calved Oct. 2, 1956. Bred and owned by Irene Hotchkiss, Leon, Kansas.

- ▶ Femco Prince Royal 11th 2603155  
Red, George Cox

## Sire

SULTAN 2756611  
Red, Adam Dietz

- ▶ Destiny's Orange Blossom 2073583  
Red, E. C. Lacy

- ▶ Prince Peter 4th 2280301  
Red, Miles of View Farms

## Dam

PRINCE PETER'S MARY 2600671  
Red, Irene Hotchkiss

- ▶ Elkhorn Golden Mary 2d 2000129  
Roan, D. H. Clark

Prince Royal 2392705  
Red, F. W. Harding  
M'side Princess Royal 19th 2537031  
Red, James C. Innes & Sons

Glenburn Destiny 1940599  
Roan, F. H. Deacon  
H'land Orange Blossom 9th 1834701  
Red, E. C. Lacy

Prince Peter 3d 2183918  
Red, Miles of View Farms  
L L Marietta 7th 2141645  
Red, Merryvale Farm

Elkhorn Governor 1908260  
Roan, H. C. Shallenberger  
Golden Mary 3d 1842702  
Red, D. H. Clark

SULTAN'S PRINCE -- we are consigning three sons of Sultan to this sale and they are all sired by a grandson of the noted Prince Royal that did such a great job for Femco Farms.

Lot 15 Bull

CLARA'S MASTERPIECE 2909-081

LE 14

Davidson

Red, calved Oct. 10, 1956. Bred and owned by Bryce Davidson, Americus, Kansas.

- ▶ Calrossie Sportsman 2596247  
Red, J. & D. P. MacGillivray

## Sire

ACADIA SPORTSMAN 2d 2655880  
Red, Cyrus S. Eaton

- ▶ Glenburn Lady Dorothy 3d 2546204  
Red, F. H. Deacon & Son

- ▶ Supreme Sequel 2262776  
Dk.Rn., M. V. Harshman

## Dam

CLARA SUPREME 2489460  
Dk.Rn., E. W. Davidson

- ▶ Silver Creek Clara 2d 2192321  
Red, W. V. Harshman

Millhills Champion (346563)  
Red, Duncan M. Stewart  
Cal. Clipper Evangeline (303412)  
Red, J. & D. P. MacGillivray

Robinwood Colonel -244412 -  
Roan, Robinson Bros.  
Royal's Lady Dorothy -309262 -  
Red, W. J. Harman

Leveldale Sequel 2065729  
Red, Mathers Bros.  
Royal Broadhooks 25th 2079249  
Red, W. V. Harshman

Gloster's Ransom 1947122  
Red, Sni-A-Bar Farms  
Clara 106th 2054748  
Red, W. V. Harshman



Lot 16 Bull

MEMORY'S RODNEY 2916-923 LE 6T9

Thorne

Dark roan, calved Oct. 12, 1956. Bred and owned by Wm. E. Thorne, Lancaster, Kansas.

- ▶ Pittodrie Fortune 2640111  
Red, R. L. Smith

### Sire

RANNOCH MEMORY 2742337  
Red, T. G. Hamilton

- ▶ Maxine Duchess -330354-  
Red, Claude Gallinger

- ▶ Sni-A-Bar Random Mercury 2288967  
Roan, Sni-A-Bar Farms

### Dam

CALLA'S CLARA 2471473  
Roan, Wm. E. Thorne

- ▶ Calla 2d 2145137  
Red, Wm. E. Thorne

Millhills Despot (355381)  
Red, Duncan M. Stewart  
Pit. Broadhooks Amy (278512)  
Red, R. L. Smith

Killearn Max 5th -254948-  
Red, Claude Gallinger  
Killearn Duchess M 2d -311310-  
Roan, Claude Gallinger

Ed. Campeon Merc. 2071109  
White, Thos. E. Wilson  
Secret Belle 2110133  
Roan, Cyril H. Mumford

Sultan Clansman 1914188  
Roan, Thos. E. Wilson  
Calla 33d 1639590  
Red, John Regier

MEMORY'S RODNEY -- is the last bull by Rannoch Memory for sale.

Lot 17 Bull

BRAEMAR 3d 2936-288

LE 6 R09

Reusser

Red, calved Oct. 15, 1956. Bred and owned by LaVerne M. Reusser, Mulvane, Kansas.

- ▶ Beaufort Bulldozer 2739171  
Red, Lord Lovat

### Sire

EDELLYN BRAEMAR 2812703  
Red, Thos. E. Wilson

- ▶ Ed. Jealousy 18th 2572235  
Red, Thos. E. Wilson

- ▶ Ed. Baronet Mercury 2322792  
Red, Thos. E. Wilson

### Dam

ORANGE BLOSSOM 5th 2694562  
R&W, LaVerne M. Reusser

- ▶ A L Orange Blossom 2406909  
Dk.Rn., John Regier & Sons

Cruggleton P'land Firth (361513)  
Red, A. J. Marshall  
Orange Talisman (251310)  
Dk.Rn., A. J. Marshall

Edellyn Royal Ldr. 2057560  
Red, W. McNair Snadden  
Ed. Jealousy 2d 2043441  
Red, Thos. E. Wilson

Ed. Diamond Merc. 2190521  
Roan, Thos. E. Wilson  
Sni-A-Bar Gloster 50th 2084383  
Red, Sni-A-Bar Farms

Marellbar Cap-A-Pie 2145678  
Roan, Wm. Bartholomay, Jr.  
Ed. Orange Blossom 48th 2126876  
Roan, Thos. E. Wilson

BRAEMAR 3d -- we are consigning the first five sons and one daughter of Edellyn Braemar to this sale. We think they are the kind that will suit the critical buying public. You will recall that Edellyn Farms sold a 10 month old heifer of Edellyn Braemar for \$1,000 in their sale last June.

# MID-KANSAS Shorthorn Breeders 23rd Annual Sale

Lot 18 Bull

BRAEMAR 2936-291

RE 7 R03

Reusser

Red, calved Oct. 21, 1956. Bred and owned by J. M. Reusser, Mulvane, Kans.

- ▶ Beaufort Bulldozer 2739171  
Red, Lord Lovat

## Sire

EDELLYN BRAEMAR 2812703  
Red, Thos. E. Wilson

- ▶ Ed. Jealousy 18th 2572235  
Red, Thos. E. Wilson

- ▶ Supreme Admiral 5th 2340304  
White, W. V. Harshman & Sons

## Dam

SILVER CREEK BROADHOOKS 24th 2618931  
Roan, W. V. Harshman

- ▶ Royal Broadhooks 27th 2192320  
Red, W. V. Harshman

Cruggleton P'land Firth (361513)  
Red, A. J. Marshall  
Orange Talisman (251310)  
Dk.Rn., A. J. Marshall

Ed. Royal Leader 2057560  
Red, W. McNair Snadden  
Edellyn Jealousy 2d 2043441  
Red, Thos. E. Wilson

Supreme Admiral 2137751  
Roan, Otto G. Johnson  
Conner's Rosewood 8th 2099715  
Roan, Oscar Nelson

Gloster's Ransom 1947122  
Red, Sni-A-Bar Farms  
Royal Broadhooks 22d 1886577  
RLW, W. V. Harshman

Lot 19 Bull

BRAEMAR 4th 2936-286

LE 6 R09

RE 6 R09

Reusser

Red, calved Oct. 26, 1956. Bred and owned by Floyd M. Reusser, Mulvane, Kansas.

- ▶ Beaufort Bulldozer 2739171  
Red, Lord Lovat

## Sire

EDELLYN BRAEMAR 2812703  
Red, Thos. E. Wilson

- ▶ Ed. Jealousy 18th 2572235  
Red, Thos. E. Wilson

- ▶ Diamond Mercury 29th 2653570  
Red, Dwayne M. Reusser

## Dam

SECRET B 2879675  
Red, Floyd M. Reusser

- ▶ Secret 2d 2750844  
Red, Floyd M. Reusser

Cruggleton P'land Firth (361513)  
Red, A. J. Marshall  
Orange Talisman (251310)  
Dk.Rn., A. J. Marshall

Ed. Royal Ldr. 2057560  
Red, W. McNair Snadden  
Ed. Jealousy 2d 2043441  
Red, Thos. E. Wilson

Ed. Baronet Merc. 2322792  
Red, Thos. E. Wilson  
Butterfly H 2383402  
Red, Kansas State College

Ed. Royal Ldr. 141st 2611494  
Red, Thos. E. Wilson  
Silver Creek Secret 2411011  
Red, W. V. Harshman



# SALINA, KANSAS • TUESDAY, APRIL 1, 1958

Lot 20 Bull

BRAEMAR 2d 2936-287

LE 6 R05

Reusser

Red, calved Nov. 19, 1956. Bred and owned by LaVerne M. Reusser, Mulvane, Kansas.

▶ Beaufort Bulldozer 2739171  
Red, Lord Lovat

## Sire

EDELLYN BRAEMAR 2812703  
Red, Thos. E. Wilson

▶ Ed. Jealousy 18th 2572235  
Red, Thos. E. Wilson

▶ Diamond Mercury 29th 2653570  
Red, Dwayne M. Reusser

## Dam

BELLE B 2879671  
Red, LaVerne M. Reusser

▶ Belle 2546726  
Roan, LaVerne M. Reusser

Cruggleton P'land Firth (361513)  
Red, A. J. Marshall  
Orange Talisman (251310)  
Dk.Rn., A. J. Marshall

Ed. Royal Leader 2057560  
Red, W. McNair Snadden  
Ed. Jealousy 2d 2043441  
Red, Thos. E. Wilson

Ed. Baronet Mercury 2322792  
Red, Thos. E. Wilson  
Butterfly H 2383402  
Red, Kansas State College

Roanridge Mixer Merc. 2440473  
Red, W. A. Cochel  
Melita Harvest Belle 2351797  
Roan, L. C. Waits & Son

Lot 21 Bull

BARONET 2936-290

LE 6 R07

Reusser

Red, calved Nov. 20, 1956. Bred and owned by J. M. Reusser, Mulvane, Kans.

▶ Beaufort Bulldozer 2739171  
Red, Lord Lovat

## Sire

EDELLYN BRAEMAR 2812703  
Red, Thos. E. Wilson

▶ Ed. Jealousy 18th 2572235  
Red, Thos. E. Wilson

▶ Diamond Mercury 29th 2653570  
Red, Dwayne M. Reusser

## Dam

CLIPPER A 2879669  
Red, J. M. Reusser

▶ Clipper 10th 2508358  
Lt.Rn., H. S. Peck

Crugg. Pentland Firth (361513)  
Red, A. J. Marshall  
Orange Talisman (251310)  
Dk.Rn., A. J. Marshall

Ed. Royal Leader 2057560  
Red, W. McNair Snadden  
Ed. Jealousy 2d 2043441  
Red, Thos. E. Wilson

Ed. Baronet Mercury 2322792  
Red, Thos. E. Wilson  
Butterfly H 2383402  
Red, Kansas State College

Goldfinder's Baronet 2379117  
Red, Cadwell Bros.  
Clipper 6th 2213990  
Roan, H. P. Peck & Son

# MID-KANSAS Shorthorn Breeders 23rd Annual Sale

Lot 22 Bull

ADMIRAL'S CHALLENGER 2925-630

RE 183

Bayles

Red, calved December 21, 1956. Bred and owned by Ralph L. Bayles, Garrison, Kansas.

- ▶ Shore Acres King Achtoi 2531328  
Red, Arnold Bros.

## Sire

SHORE ACRES ADMIRAL 2684925  
Dk.Rn., Arnold Bros.

- ▶ Orange Blossom A 22d 2565992  
Roan, Arnold Bros.

- ▶ Village Major 2337388  
Red, Tomson Bros.

## Dam

MATCHLESS MARGARET 2719516  
Red, Ralph L. Bayles

- ▶ Matchless Marchesa 10th 2160954  
Roan, S. B. Amcoats

- Shore Acres Achtoi 2282238  
Red, Arnold Bros.
- Saltoun Broadhooks Belle 2403621  
Red, A. M. T. Fletcher

- Shore Acres Landmark 2427957  
Red, A. M. T. Fletcher
- Orange Blossom A 2d 2176338  
Red, Arnold Bros.

- Ed. Royal Favorite 2163852  
Red, J. D. Allen
- Village Lavender 16th 2161255  
Roan, Tomson Bros.

- Sni-A-Bar Mintmaster 1990072  
Roan, Sni-A-Bar Farms
- Matchless Marchesa 9th 2011537  
White, S. B. Amcoats

ADMIRAL'S CHALLENGER -- you will like this big, rugged, burley, senior yearling by Shore Acres Admiral.

Lot 23 Bull

SHADY ACRE IMPRESSION 2926-004

RE 25-57

Slaven

Red, calved December 31, 1956. Bred and owned by Winfield Slaven, Coolidge, Kansas.

- ▶ Woodhead First Impression 2549785  
Dk.Rn., R. J. Henderson

## Sire

W F IMPRESSION 31st 2783846  
Roan, R. L. Bach & Son

- ▶ Duchess of Gloster 2580496  
Roan, R. L. Bach

- ▶ Hillcroft Victory 2481850  
Red, E. M. Travelstead

## Dam

SHADY ACRE DUCHESS 2611850  
Roan, Henry Dietz

- ▶ Imperial Gloster 6th 2051974  
White, Ralph J. Taylor

- Pittodrie Impression (337962)  
Red, R. L. Smith
- Keam Zoe 18th (220024)  
Dk.Rn., A. M. Law

- Ed. Medley Mercury 2263171  
Dk.Rn., Thos. E. Wilson
- Gloster Queen 6th 2051428  
Roan, R. L. Bach

- Marellbar Footstep 2255849  
Red, Wm. Bartholomay, Jr.
- Cecelia's Victory 2171164  
Red, Frank L. Thompson

- Imperial Renown 1967241  
Roan, Ralph J. Taylor
- Imperial Gloster 3d 1918549  
White, Ralph J. Taylor

SHADY ACRE IMPRESSION -- he is sired by the Mid-Kansas reserve champion bull from the R. L. Bach herd. His dam is one of my best cows by the Chicago Sale champion, the \$3,750.00 Hillcroft Victory used by Henry Dietz.



# SALINA, KANSAS • TUESDAY, APRIL 1, 1958

Lot 24 Bull

BROWDALE SULTAN 2940-246 RE RH63

Hotchkiss

Red, calved January 10, 1957. Bred and owned by R. E. Hotchkiss, Leon, Kansas.

- ▶ Femco Prince Royal 11th 2603155  
Red, George Cox

## Sire

SULTAN 2756611  
Red, Adam Dietz

- ▶ Destiny's Orange Blossom 2073583  
Red, E. C. Lacy

- ▶ Prince Peter 4th 2280301  
Red, Miles of View Farms

## Dam

PETER'S GIRL 2546473  
Red, R. C. Hotchkiss

- ▶ Maus 111th 1845758  
Red, A. C. Shallenberger

Prince Royal 2392705  
Red, F. W. Harding  
Muirside Princ. Royal 19th 2537031  
Red, James C. Innes & Sons

Glenburn Destiny 1940599  
Roan, F. H. Deacon  
H'land Orange Blossom 9th 1834701  
Red, E. C. Lacy

Prince Peter 3d 2183918  
Red, Miles of View Farms  
L L Marietta 7th 2141645  
Red, Merryvale Farm

Divide Superb 1683191  
Red, The Allen Cattle Co.  
Maud 102d 1647235  
Roan, D. Hampton

Lot 25 Bull

VICTORY JASPER 2928-058 LE 76 RE 76

Burch

Red, calved Jan. 25, 1957. Bred by Darrell Burch, Roxbury, Kansas. Owned by Randall Burch, Roxbury, Kansas.

- ▶ Hillcroft Victory 2481850  
Red, E. M. Travelstead

## Sire

SPRINGDALE VICTORY 2d 2593427  
Red, Henry Dietz

- ▶ Elkhorn Bloom 3d 2159155  
Red, D. H. Clark

- ▶ Mercury's Jasper 2d 2552465  
Red, Wm. E. Thorne

## Dam

DUCHESS OF GLOSTER 6th 2733743  
Red, Wm. E. Thorne

- ▶ Duchess of Gloster 3d 2386708  
Roan, Wm. E. Thorne

Marellbar Footstep 2255849  
Red, Wm. Bartholomay, Jr.  
Cecelia's Victory 2171164  
Red, Frank L. Thompson

Ed. Radiant Command 2024080  
Red, Thos. E. Wilson  
Lavender Bloom 1834081  
Red, D. H. Clark

Sni-A-Bar Ransom Merc. 2288967  
Roan, Sni-A-Bar Farms  
Gwendoline Myrtle 2d 2341058  
Dk.Rn., Wm. E. Thorne

Divide Olympic 2117652  
Roan, The Allen Cattle Co.  
Duchess of Gloster 2d 2219456  
Roan, Wm. E. Thorne

VICTORY JASPER -- sired by a son of the \$4,000 Hillcroft Victory and out of a daughter of the \$10,000 Mercury's Jasper 2d.

# MID-KANSAS Shorthorn Breeders 23rd Annual Sale

Lot 26 Bull

MIL-NITA BANK STANDARD 2d 2950-003

RE 154

Nagely

Red, calved Jan. 28, 1957. Bred and owned by Milton H. Nagely, Abilene, Kans.

- ▶ N-Bar Prince 2575100  
Red, W. J. Nixon

## Sire

W L BANK STANDARD 17th 2786460  
Red, W. C. Anderson & Son

- ▶ Secret Maxine 2d 2541930  
Red, Henry Fisher

- ▶ Curtiss Candy Calypso 2400762  
Red, Curtiss Candy Co.

## Dam

VICTORIA 5th 2574503  
Roan, Milton H. Nagely

- ▶ Roan Victoria 4th 2028831  
Roan, J. G. Gibson & Son

Lakeside Champion 4th 2379485  
Red, H. E. Brown, Est.  
Meadow Queen 2d 2378974  
Roan, W. J. Nixon

Killearn Max Stamp 2504441  
Red, Claude Gallinger  
Wheatland Secret 30th 2214286  
Red, C. J. Broughton

Ed. Peerless Merc. 2129645  
White, Thos. E. Wilson  
Rosebud of Marellbar 2d 2176937  
Red, Wm. Bartholomay, Jr.

Proud Chieftain 1899861  
Roan, Tomson Bros.  
Roan Victoria 3d 1948607  
Roan, J. G. Gibson & Son

MIL-NITA BANK STANDARD 2d -- we are selling three sons of WL Bank Standard 17th by the International grand champion N-Bar Prince here at Salina. They are young but out of these Curtiss Candy Calypso dams they have plenty of growth, ruggedness and substance.

Lot 27 Bull

MIL-NITA BANK STANDARD 2950-002

RE 153

Nagely

Red, calved Feb. 12, 1957. Bred and owned by Milton H. Nagely, Abilene, Kansas.

- ▶ N-Bar Prince 2575100  
Red, W. J. Nixon

## Sire

W L BANK STANDARD 17th 2786460  
Red, W. C. Anderson & Son

- ▶ Secret Maxine 2d 2541930  
Red, Henry Fisher

- ▶ Elkhorn Marshal 2196327  
Red, D. H. Clark

## Dam

BUTTERFLY BEAUTY 2534141  
Red, Milton H. Nagely

- ▶ Butterfly Lady 3d 2279663  
Red, Milton H. Nagely

Lakeside Champion 4th 2379485  
Red, H. E. Brown, Est.  
Meadow Queen 2d 2378974  
Roan, W. J. Nixon

Killearn Max Stamp 2504441  
Red, Claude Gallinger  
Wheatland Secret 30th 2214286  
Red, C. J. Broughton

Ed. Radiant Command 2024080  
Red, Thos. E. Wilson  
64th Duchess of Gloster 2055059  
Red, Mathers Bros.

Prince Royal 2082526  
Roan, Miles of View Farms  
Sunflower Lady 2045469  
Red, Milton H. Nagely



Lot 28 Bull

E V CONTINUATION (applied for)

RE 706

Collier

Red, calved February 21, 1957. Bred and owned by Ralph D. & James M. Collier, Alta Vista, Kansas.

- ▶ Erimus Dandy 2598413  
Red, R. S. deQ. Quincey

*Sire*

H V F DANDY 3d 2700623  
Red, D. W. Bishop

- ▶ M F Floss 3d 2501983  
Red, W. J. Russell

- ▶ Maxw. Harvester 2035827  
Roan, Maxw. Farms, Inc.

*Dam*

CRIMSON BELLE 2d 2563608  
Red, R. M. Collier & Son

- ▶ Princess Crimson M 2364873  
Red, R. M. Collier & Son

{ Ballathie Command (342592)  
Red, S. J. L. Hardie  
Aldsworth Pattie (259837)  
Red, William Garne

{ Calrossie Formula 2536602  
Red, J. & D. P. MacGillivray  
Klaymor Floss 4th 2447585  
Red, W. J. Russell

{ Browndale Harvester 2035827  
Roan, Maxw. Farms, Inc.  
Kinellar Broadhooks 3d 1996986  
Roan, Duncan Campbell

{ Sni-A-Bar Gladiator 2084369  
Red, Sni-A-Bar Farms  
Princess Crimson 2056902  
Roan, R. M. Collier & Son

E V CONTINUATION -- Thick and burly. We lost his dam by lightning when he was about 2-months-old. He has come the rest of the way without milk. His maternal half-brother was reserve champion bull at the State Sale in 1955.

Lot 29 Bull

MIL-NITA BANK STANDARD 5th 2950-005

RE 157

Nagely

Dark Roan, calved March 12, 1957. Bred and owned by Milton H. Nagely, Abilene, Kansas.

- ▶ N-Bar Prince 2575100  
Red, W. J. Nixon

*Sire*

W L BANK STANDARD 17th 2786460  
Red, W. C. Anderson & Son

- ▶ Secret Maxine 2d 2541930  
Red, Henry Fisher

- ▶ Curtiss Candy Calypso 2400762  
Red, Curtiss Candy Co.

*Dam*

MIL-NITA AUGUSTA 2742484  
Dk.Rn., Milton H. Nagely

- ▶ Sni-A-Bar Augusta 29th 1990086  
Red, Sni-A-Bar Farms

{ Lakeside Champion 4th 2379485  
Red, E. H. Brown Est.  
Meadow Queen 2d 2378974  
Roan, W. J. Nixon

{ Killearn Max Stamp 2504441  
Red, Claude Gallinger  
W'land Secret 30th 2214286  
Red, C. J. Broughton

{ Ed. Peerless Merc. 2129645  
White, Thos. E. Wilson  
Rosebud of Marellber 2d 2176937  
Red, Wm. Bartholomay, Jr.

{ Sni-A-Bar Ensign 1637058  
Red, Sni-A-Bar Farms  
Sni-A-Bar Aug. 4th 1564466

# MID-KANSAS Shorthorn Breeders 23rd Annual Sale

Lot 30 Bull

CLIPPER MERCURY 2925-871 LE S457

Shafer

Red, calved March 25, 1957. Bred by H. H. Humphrey, Larkinburg, Kansas. Owned by Eldon L. Shafer, Mayetta, Kansas.

- ▶ Mercury's Major 2525105  
Red, Wm. E. Thorne

## Sire

CLIPPER MAX 2643994  
Roan, Tomson Bros.

- ▶ Lady Clipper 6th 2546140  
Red, Tomson Bros.

- ▶ Ed. Radiant Command 2024080  
Red, Thos. E. Wilson

## Dam

COMMAND GOLD BANK BEAUTY 2556472  
Roan, H. H. Humphrey

- ▶ Gold Bank Beauty 2279230  
Roan, H. H. Humphrey

{ Sni-A-Bar Random Merc. 2288967  
Roan, Sni-A-Bar Farms  
Wimple Maid 4th 2279120  
White, Wm. E. Thorne

{ Killearn Max 104th 2395286  
Red, Claude Gallinger  
Helfred Clipper 5th 2309927  
Red, F. W. Hubbell

{ Ed. Command 2000000  
Roan, C. A. L. Gordon  
Millhills Augusta 25th 1753617  
Roan, Duncan M. Stewart

{ Sni-A-Bar Solid Gold 2031722  
Red, Sni-A-Bar Farms  
Roan Beauty 8th 1880905  
Roan, H. H. Humphrey

CLIPPER MERCURY -- here is a good son of the Mid-Kansas champion, Clipper Max, and out of a dam of the \$4,000 Edellyn Radiant Command.

Lot 31 Bull

LEADER'S VICTOR 2926-725 LE 7T7

Thorne

Red, calved April 7, 1957. Bred and owned by Wm. E. Thorne, Lancaster, Kansas.

- ▶ Rannoch Memory 2742337  
Red, T. G. Hamilton

## Sire

MEMORY'S LEADER 2856693  
Red, Wm. Thorne

- ▶ Gwendoline Myrtle 3d 2641719  
Red, Wm. E. Thorne

- ▶ Sni-A-Bar Ransom Merc. 2288967  
Roan, Sni-A-Bar Farms

## Dam

VICTORIA'S DOROTHY 2471475  
Red, Wm. E. Thorne

- ▶ Victoria Lassie 2063256  
Roan, Wm. E. Thorne

{ Pittodrie Fortune 2640111  
Red, R. L. Smith  
Maxine Duchess -330354-  
Red, Claude Gallinger

{ Leveldale Blockade 2496273  
Red, Mathers Bros.  
Gwendoline Myrtle 2d 2341058  
Dk.Rn., Wm. E. Thorne

{ Ed. Campeon Merc. 2071109  
White, Thos. E. Wilson  
Secret Belle 2110133  
Roan, Cyril H. Mumford

{ Sultan Clansman 1914188  
Roan, Thos. E. Wilson  
Victoria's Rosebud 1727896  
Roan, Wm. E. Thorne

LEADER'S VICTOR -- a bull that has tremendous scale and substance for his age and is out of a tremendously big cow by Sni-A-Bar Ransom Mercury. This bull will sire big, rugged calves.



# SALINA, KANSAS • TUESDAY, APRIL 1, 1958

Lot 32 Bull

ROYAL SULTAN 2940-247

RE RH53

Hotchkiss

Red, calved May 1, 1957. Bred and owned by R. C. Hotchkiss, Leon, Kansas.

- ▶ Femco Prince Royal 11th 2603155  
Red, George Cox

## Sire

SULTAN 2756611

Red, Adam Dietz

- ▶ Destiny's Orange Blossom 2073583  
Red, E. C. Lacy

- ▶ Prince Peter 4th 2280301  
Red, Miles of View Farms

## Dam

PETER'S DUCHESS 2600669

Roan, R. C. Hotchkiss

- ▶ Radiant Maid 2420122  
Roan, R. C. Hotchkiss

- ▶ Prince Royal 2392705  
Red, F. W. Harding
- ▶ Muirside Princ. Royal 19th 2537031  
Red, James C. Innes & Sons

- ▶ Glenburn Destiny 1940599  
Roan, F. H. Deacon
- ▶ H'land Orange Blossom 9th 1834701  
Red, E. C. Lacy

- ▶ Prince Peter 3d 2183918  
Red, Miles of View Farms
- ▶ L L Marietta 7th 2141645  
Red, Merryvale Farm

- ▶ Elkhorn Dreadnaught 2206697  
Red, Roy C. Hotchkiss
- ▶ Elkhorn Bashful 4th 2227751  
Roan, D. H. Clark

Lot 33 Female

RED QUEEN 2528639

LE 30

Crockett

Red, calved Sept. 26, 1948. Bred and owned by Robt. J. Crockett, Kinsley, Kansas.

- ▶ Divide Olympic 2117652  
Roan, The Allen Cattle Co.

## Sire

DUKE'S ARCHER 2d 2386707

Red, Wm. E. Thorne

- ▶ Diamond Lily 2063254  
Red, Wm. B. Thorne

- ▶ Ashbourne Fame 1882244  
Red, A. C. Shallenberger

## Dam

FAMOUS QUEEN 2054421

Red, Robert J. Crockett

- ▶ Browndale Queen 1932012  
Red, Robt. J. Crockett

- ▶ Duke of Killlearn 1919448  
Roan, Claude Gallinger
- ▶ Divide Starlight 33d 1904282  
Roan, The Allen Cattle Co.

- ▶ Sultan Clansman 1914188  
Roan, Thos. E. Wilson
- ▶ Village Diamond 18th 1929589  
Red, Arthur Bloomer

- ▶ Divide Superb 1683191  
Red, The Allen Cattle Co.
- ▶ Augusta C 1586628  
Red, A. C. Shallenberger

- ▶ Red Victor 1768962  
Red, Tomson Bros.
- ▶ Wildon's Lavender Queen 1702110  
Roan, W. C. Edwards, Jr.

RED QUEEN -- is a short, thick heifer. May be bred by sale time.

# MID-KANSAS Shorthorn Breeders 23rd Annual Sale

Lot 34 Female    ORANGE BLOSSOM BEAUTY 6th 2589638    RE 9S41    Thorne

Red, calved Sept. 27, 1949. Bred by Oren Lee Staley, Rea, Missouri. Owned by Wm. E. Thorne, Lancaster, Kansas.

- ▶ Ed. Campeon Mercury 2071109  
White, Thos. E. Wilson

## Sire

SNI-A-BAR RANSOM MERCURY 2288968  
Roan, Sni-A-Bar Farms

- ▶ O A C Mysie 8th 2161916  
RLW, Ontario Agr'l College

- ▶ Glastullich Bondsman 2104905  
Dk.Rn., H. B. Norris

## Dam

ORANGE BLOSSOM BEAUTY 2d 2427165  
Roan, Oren Lee Staley

- ▶ Orange Blossom Beauty 2096924  
Red, Oren Lee Staley

Calrossie Mercury 1957318  
White, J. MacGillivray  
Col. Princess 51st 1773024  
Roan, Duthie Webster

O A C Ransom 23d -239526-  
Red, Ontario Agr'l Coll.  
O A C Mysie 3d -292042-  
Dk.Rn., Ontario Agr'l Coll.

Klaymor Delegate 2077010  
Roan, Lord Lovat  
Norfolk Bessie 2070704  
Red, H. B. Norris

Keystone Robin 3d 1959852  
Red, Joseph Duncan & Sons  
Lady Orange Blossom 78th 1942885  
RWM, Jos. Duncan & Sons

ORANGE BLOSSOM BEAUTY 6th -- has a red heifer calf and WILL BE REBRED TO BRAEDOON QUICKSILVER.

Lot 35 Female    E V MADAM FOXGLOVE D 2d 2914-664    RE 635    Collier

Red, calved March 17, 1956. Bred and owned by Ralph D. & James M. Collier, Alta Vista, Kansas.

- ▶ Erimus Dandy 2598413  
Red, R. S. deQ. Quincey

## Sire

H V F DANDY 3d 2700623  
Red, D. W. Bishop

- ▶ M F Floss 3d 2501983  
Red, W. J. Russell

- ▶ Divide Alert 2207761  
Red, The Allen Cattle Co.

## Dam

E V MADAM FOXGLOVE 2d 2705956  
Red, Ralph D. & James M. Collier

- ▶ Madam Foxglove A 2563596  
Red, Don Collier

Ballathie Command (342592)  
Red, S. J. L. Hardie  
Aldsworth Pattie (259837)  
Red, Wm. Garne

Calrossie Formula 2536602  
Red, J. & D. P. MacGillivray  
Klaymor Floss 4th 2447585  
Red, W. J. Russell

Duke of Killearn 1919448  
Roan, Claude Gallinger  
Div. Bridal Blossom 2d 1718856  
Roan, The Allen Cattle Co.

Divide Alert 2207761  
Red, The Allen Cattle Co.  
Madam Foxglove 2279430  
Roan, Don Collier

E V MADAM FOXGLOVE D 2d -- thick, short-legged, and solid red. Should be safe in calf by sale date. This family of cows have produced champion heifers at both this sale and the state sale.



Lot 36 Female

ROAN VIOLET 2754-721

LE 76

Crockett

Roan, calved Feb. 4, 1953. Bred and owned by Robt. J. Crockett, Kinsley, Kansas.

- ▶ Royal Sultan 2337387  
Roan, Tomson Bros.

*Sire*

ROYAL DELEGATE 2535267  
Roan, Arthur Bloomer

- ▶ Maud 2d 2109692  
Red, H. B. Norris

- ▶ College Premier 3d 2145231  
Red, Kansas State College

*Dam*

VIOLET 2421480  
RWM, Robt. J. Crockett

- ▶ White Violet 5th 2241582  
White, Robt. J. Crockett

Ed. Royal Favorite 2163852  
Red, J. D. Allen  
Elmhurst Royal Aug. 2014566  
Roan, W. J. Sayre & Son

Klaymor Delegate 2077010  
Roan, Lord Lovat  
Norfolk Maudess 2070707  
Roan, John Miller, Jr.

Wernacres Premier 1992779  
Red, H. L. Wernicke & Son  
Ace's Narcissus 2d 2010293  
Red, Kansas State College

Sni-A-Bar Christmas Star 2d 1990061  
Roan, Sni-A-Bar Farms  
White Violet 3d 1894635  
White, D. W. Crockett & Son

ROAN VIOLET -- WILL CALVE BY SALE DAY TO THE SERVICES OF OUR GOOD LEADER BULL.

Lot 37 Female

VICTORIA VIOLET 2909-835

LE 6T90

Thorne

Red, calved July 12, 1956. Bred and owned by Wm. E. Thorne, Lancaster, Kansas.

- ▶ Rannoch Memory 2742337  
Red, T. G. Hamilton

*Sire*

MEMORY'S MAX 2797530  
Red, Wm. E. Thorne

- ▶ Diamond's Patience 2d 2574678  
Red, Wm. E. Thorne

- ▶ Leveldale Blockade 2496273  
Red, Mathers Bros.

*Dam*

VICTORIA PRINCESS 2d 2641724  
Red, Wm. E. Thorne

- ▶ Victoria's Dorothy 2471475  
Red, Wm. E. Thorne

Pittodrie Fortune 2640111  
Red, R. L. Smith  
Maxine Duchess -330354-  
Red, Claude Gallinger

Sni-A-Bar Random Merc. 2288967  
Roan, Sni-A-Bar Farms  
Diamond's Patience 2044771  
Red, Wm. E. Thorne

Glassingall Research 2358301  
Dk.Rn., W. C. Dickson  
Leveldale Blossom 11th 2335811  
Red, Mathers Bros.

Sni-A-Bar Random Merc. 2288967  
Roan, Sni-A-Bar Farms  
Victoria Lassie 2063256  
Roan, Wm. E. Thorne

VICTORIA VIOLET -- WILL BE MATED BY BRAEDOON QUICKSILVER. Vaccinated for Bangs.

# MID-KANSAS Shorthorn Breeders 23rd Annual Sale

Lot 38 Female E V STARLIGHT LAVENDER 4th 2914-672 RE 658 Collier

Red, calved Sept. 20, 1956. Bred and owned by Ralph D. & James M. Collier, Alta Vista, Kansas.

- ▶ Erimus Dandy 2598413  
Red, R. S. deQ. Quincey

## Sire

H V F DANDY 3d 2700623  
Red, D. W. Bishop

- ▶ M F Floss 3d 2501983  
Red, W. J. Russell

- ▶ Kelburn Bugler 2546511  
Dk.Rn., Richardson Stock Farms

## Dam

STARLIGHT LAVENDER B 2579679  
Roan, R. M. Collier & Son

- ▶ Starlight Lavender 2437373  
Red, R. M. Collier & Son

- ▶ Bal. Command (342592)  
Red, S. J. L. Hardie  
Aldsworth Pattie (259837)  
Red, Wm. Garne

- ▶ Calrossie Formula 2536602  
Red, J. & D.P. MacGillivray  
Klaymor Floss 4th 2447585  
Red, W. J. Russell

- ▶ Mount Banker 2451108  
Dk.Rn., Geo. Douglas  
Crieffvechter Mysie 46th 2546512  
Red, W. D. Dron

- ▶ Sni-A-Bar Gladiator 2084369  
Red, Sni-A-Bar Farms  
Div. Star Lavender 2207773  
Red, The Allen Cattle Co.

EV STARLIGHT LAVENDER 4th -- from a popular cow family. Her smoothness and quality makes her a top prospect.

Lot 39 Female EMMA SULTANA 18th 2912-445 RE 537 McIlrath

Red, calved Sept. 30, 1956. Bred and owned by McIlrath Bros., Kingman, Kansas.

- ▶ Millhills Yesteryear (316830)  
Red, Duncan M. Stewart

## Sire

CRIEFFVECHTER JAMES 2751348  
Red, W. D. Dron

- ▶ Crieffvechter Eliza (259024)  
Red, W. D. Dron

- ▶ Consul Sensation 2230101  
Roan, W. A. Dryden & Son

## Dam

EMMA SULTANA 15th 2538561  
Roan, McIlrath Bros.

- ▶ Emma Sultana 11th 2127196  
Red, McIlrath Bros.

- ▶ Cluny Crown Diamond (308129)  
Red, Mrs. B.H.L. Gordon  
Blood Royal 19th (223346)  
Dk.Rn., Duncan M. Stewart

- ▶ Pit. Grand Keystone (316728)  
Red, R. L. Smith  
Clanmurray Dairymaid 2d (225491)  
RLW, C. N. Baxter

- ▶ Calrossie Vice Consul (2110110)  
Red, John MacGillivray  
Blythesome 59th -286642-  
White, W. A. Dryden

- ▶ Rodney Emblem 1750594  
Red, McIlrath Bros.  
Emma Sultana 4th 1705111  
Red, McIlrath Bros.



Lot 40 Female

MIL-NITA MERRY LADY 2950-011 RE 149

Nagely

Dark Roan, calved Oct. 22, 1956. Bred and owned by Milton H. Nagely, Abilene, Kansas.

- ▶ N-Bar Prince 2575100  
Red, W. J. Nixon

- ↳ Lakeside Champion 4th 2379485  
Red, H. E. Brown, Est.  
Meadow Queen 2d 2378974  
Roan, W. J. Nixon

*Sire*

W L BANK STANDARD 17th 2786460  
Red, W. C. Anderson & Son

- ▶ Secret Maxine 2d 2541930  
Red, Henry Fisher

- ↳ Killlearn Max Stamp 2504441  
Red, Claude Gallinger  
Wheatland Secret 30th 2214286  
Red, C. J. Broughton

- ▶ Curtiss Candy Calypso 2400762  
Red, Curtiss Candy Co.

- ↳ Ed. Peerless Merc. 2129645  
White, Thos. E. Wilson  
Rosebud of Marellbar 2d 2176937  
Red, Wm. Bartholomay, Jr.

*Dam*

MERRY LADY 25th 2574499  
Red, Milton H. Nagely

- ▶ Merry Lady 24th 2242963  
White, John Regier & Sons

- ↳ A L Cupbearer 2132563  
Roan, John Regier & Sons  
Merry Lady 17th 1750586  
Roan, Okla. A & M College

MIL-NITA MERRY LADY -- one of the two open heifers we are selling by WL Bank Standard 17th, our outstanding breeding son of the International grand champion.

Lot 41 Female

MIL-NITA BUTTERFLY 9th 2950-009 RE 151

Nagely

Red, calved Nov. 9, 1956. Bred and owned by Milton H. Nagely, Abilene, Kansas.

- ▶ N-Bar Prince 2575100  
Red, W. J. Nixon

- ↳ Lakeside Champion 4th 2379485  
Red, H. E. Brown, Est.  
Meadow Queen 2d 2378974  
Roan, W. J. Nixon

*Sire*

W L BANK STANDARD 17th 2786460  
Red, W. C. Anderson & Son

- ▶ Secret Maxine 2d 2541930  
Red, Henry Fisher

- ↳ Killlearn Max Stamp 2504441  
Red, Claude Gallinger  
Wheatland Secret 305h 2214286  
Red, C. J. Broughton

- ▶ Curtiss Candy Calypso 2400762  
Red, Curtiss Candy Co.

- ↳ Ed. Peerless Mercury 2129645  
White, Thos. E. Wilson  
R'bud of Marellbar 2d 2176937  
Red, Wm. Bartholomay, Jr.

*Dam*

M-N BUTTERFLY LADY 2790234  
Roan, Milton H. Nagely

- ▶ Butterfly Lady 5th 2439428  
Red, Milton H. Nagely

- ↳ Elkhorn Marshal 2196327  
Red, D. H. Clark  
Butterfly Lady 2d 2279662  
Red, Milton H. Nagely

# MID-KANSAS Shorthorn Breeders 23rd Annual Sale

Lot 42 Female

ROSE 6th 2936-293

RE 6 R06

Reusser

Red, calved Dec. 13, 1956. Bred and owned by J. M. Reusser, Mulvane, Kans.

- ▶ Beaufort Bulldozer 2739171  
Red, Lord Lovat

## Sire

EDELLYN BRAEMAR 2812703  
Red, Thos. E. Wilson

- ▶ Edellyn Jealousy 18th 2572235  
Red, Thos. E. Wilson

- ▶ Comrie Captivator 2154910  
Red, Robert Macfarlane

## Dam

CITY VIEW ROSE 16th 2521904  
Red, W. A. Young, Jr.

- ▶ City View Rose 14th 2240184  
Red, W. A. Young, Jr.

Cruggleton P'land Firth (361513)  
Red, A. J. Marshall  
Orange Talisman (251310)  
Dk.Rn., A. J. Marshall

Edellyn Royal Ldr. 2057560  
Red, W. McNair Snadden  
Ed. Jealousy 2d 2043441  
Red, Thos. E. Wilson

Klaymor Equipoise 2023758  
White, W. J. Russell  
Comrie Rosebud 2022790  
Red, A. J. Marshall

Browndale Masterpiece 1929250  
Roan, Robinwood Farms  
City View Rose 9th 1957033  
Red, W. A. Young, Jr.

Lot 43 Female

HELEN 21st 2926-677

RE 57

Reusser

Red, calved Jan. 5, 1957. Bred and owned by D. A. Reusser, Wellington, Kansas.

- ▶ Beaufort Bulldozer 2739171  
Red, Lord Lovat

## Sire

EDELLYN BRAEMAR 2812703  
Red, Thos. E. Wilson

- ▶ Ed. Jealousy 18th 2572235  
Red, Thos. E. Wilson

- ▶ Ed. Royal Leader 141st 2611494  
Red, Thos. E. Wilson

## Dam

HELEN 17th 2756644  
Red, D. A. Reusser

- ▶ Helen 11th 2675057  
Red, D. A. Reusser

Cruggleton P'land Firth (361513)  
Red, A. J. Marshall  
Orange Talisman (251310)  
Dk.Rn., A. J. Marshall

Ed. Royal Ldr. 2057560  
Red, W. McNair Snadden  
Ed. Jealousy 2d 2043441  
Red, Thos. E. Wilson

Ed. Royal Ldr. 23d 2263178  
Red, Thos. E. Wilson  
Ed. Broadhooks 30th 2322802  
Dk.Rn., Thos. E. Wilson

Ed. Baronet Mercury 2322792  
Red, Thos. E. Wilson  
Helen 6th 2556091  
Dk.Rn., D. A. Reusser

HELEN 21st -- here is a couple of really classy daughters of Edellyn Braemar. In the last Edellyn Sale a 10-month-old daughter of Edellyn Braemar, lot 40, sold for \$1,000 to S. G. Bennett, Georgetown, Ontario, Canada.



Lot 44 Female

HELEN 22d 2926-678 RE 570

Reusser

Red, calved January 24, 1957. Bred and owned by D. A. Reusser, Wellington, Kansas.

- ▶ Beaufort Bulldozer 2739171  
Red, Lord Lovat

*Sire*

EDELLYN BRAEMAR 2812703  
Red, Thos. E. Wilson

- ▶ Ed. Jealousy 18th 2572235  
Red, Thos. E. Wilson

- ▶ Ed. Baronet Mercury 2322792  
Red, Thos. E. Wilson

*Dam*

HELEN 16th 2756643  
Red, D. A. Reusser

- ▶ Helen 7th 2556092  
Dk.Rn., D. A. Reusser

- Cruggleton P'land Firth (361513)  
Red, A. J. Marshall  
Orange Talisman (251310)  
Dk.Rn., A. J. Marshall

- Edellyn Royal Ldr. 2057560  
Red, W. McNair Snadden  
Edellyn Jealousy 2d 2043441  
Red, Thos. E. Wilson

- Ed. Diamond Mercury 2190521  
Roan, Thos. E. Wilson  
Sni-A-Bar Gloster 50th 2084383  
Red, Sni-A-Bar Farms

- Edellyn Formost Merc. 2d 2397304  
Red, Thos. E. Wilson  
Helen 4th 2365770  
Red, Rae Reusser

Lot 45 Female

VENUS 5th 2953-651 RE S168

Stoffer

Roan, calved May 10, 1957. Bred and owned by Earl E. Stoffer, Olsburg, Kans.

- ▶ Gregg Farms Hoarfrost 2492499  
White, D. M. Gregg

*Sire*

HOARFROST'S MERCURY 2718890  
Roan, H. H. Humphrey

- ▶ A L Orange Blossom 2d 2528265  
Red, Hans Regier

- ▶ Beau Mercury 2439337  
Roan, Albert Hamann

*Dam*

VENUS 3d 2652705  
Red, Earl E. Stoffer

- ▶ Venus L 2d 2406158  
Roan, J. E. Bowser & Son

- Ed. Valiant Mercury 2247154  
Dk.Rn., Thos. E. Wilson  
Gregg Farms Cluny Clara 2364150  
Roan, D. M. Gregg

- Ed. Royal Favorite 2163852  
Red, J. D. Allen  
Ed. Orange Blossom 48th 2126876  
Roan, Thos. E. Wilson

- Ed. Modoc Mercury 2247144  
Red, Thos. E. Wilson  
Augusta's Delight 1806705  
R&W, A. Hamann

- Proud Premier 2045384  
Roan, Faye Leichter  
Venus L 1939142  
Roan, W. F. Baer

VENUS 5th -- we are selling 14 attractive young OPEN heifers because Merv Aegerter said he needed some more cattle for this sale. These daughters of Hoarfrost's Mercury will all make top 4-H club prospects as they are the cream of the crop. The calves by Hoarfrost's Mercury have all been excellent doers winning weight of gain contests as well as being top steer calves. The third prize summer yearling steer and member of the champion group of three Short-horn steers at the 1958 Denver Stock Show exhibited by Kansas State College was bred by us and sired by Hoarfrost's Mercury.

# MID-KANSAS Shorthorn Breeders 23rd Annual Sale

Lot 46 Female

CLEARVIEW ROYAL LEADER (applied for)

Schmitz

White, calved May 22, 1957. Bred and owned by Leo Schmitz, Marysville, Kansas.

►  
*Sire*

KICKAPOO FORT COMMAND



► Marellbar Radiant

*Dam*

CLEARVIEW ROYAL ROAN



CLEARVIEW ROYAL GLEAM -- sired by Kickapoo Fort Command, reserve champion at the Illinois State Sale in 1954. Clearview Royal Gleam's great granddam was champion female at the Beloit Sale in 1953. She is from our T. B. Accredited Herd number 550104 and is officially calfhooed vaccinated for Bangs.

Lot 47 Female

GOLDEN GIFT 18th 2953-639 RE S164

Stoffer

Red, calved June 2, 1957. Bred and owned by Earl E. Stoffer, Olsburg, Kans.

► Gregg Farms Hoarfrost 2492499  
White, D. M. Gregg

*Sire*

HOARFROST'S MERCURY 2718890

Roan, H. H. Humphrey

► A L Orange Blossom 2d 2528265  
Red, Hans E. Regier

► Killlearn Max 10th 2395286  
Red, Claude Gallinger

*Dam*

GOLDEN GIFT 10th 2583621

Red, Tomson Bros.

► Dale's Golden Gift 104th 2020861  
Roan, M. C. Vansell & Son

Ed. Valiant Mercury 2247154  
Dk.Rn., Thos. E. Wilson  
Gregg Farms Cluny Clara 2364150  
Roan, D. M. Gregg

Ed. Royal Favorite 2163852  
Red, J. D. Allen  
Ed. Orange Blossom 48th 2126876  
Roan, Thos. E. Wilson

Killlearn Max 5th -254948-  
Red, Claude Gallinger  
Monarch's Jewel -309754-  
Red, Claude Gallinger

Ashland Royal 1868400  
Red, M. C. Vansell & Son  
Dale's Golden Gift 58th 1795024  
White, M. C. Vansell



Lot 48 Female

PRINCESS ROSEMARY 9th 2953-644

RE S165

Stoffer

Red, calved June 16, 1957. Bred and owned by Earl E. Stoffer, Olsburg, Kans.

- ▶ Gregg Farms Hoarfrost 2492499  
White, D. M. Gregg

*Sire*

HOARFROST'S MERCURY 2718890  
Roan, H. H. Humphrey

- ▶ A L Orange Blossom 2d 2528265  
Red, Hans E. Regier

- ▶ Curtiss Calypso 2d 2628358  
Red, Milton H. Nagely

*Dam*

PRINCESS ROSEMARY 7th 2800514  
Red, Earl E. Stoffer

- ▶ Princess Rosemary 4th 2624926  
Roan, Earl E. Stoffer

- Ed. Valiant Merc. 2247154  
Dk.Rn., Thos. E. Wilson  
Gregg Farms Cluny Clara 2364150  
Roan, D. M. Gregg

- Ed. Royal Favorite 2163852  
Red, J. D. Allen  
Ed. Orange Blossom 48th 2126876  
Roan, Thos. E. Wilson

- Curtiss Candy Calypso 2400762  
Red, Curtiss Candy Co.  
Blythesome 77th 2437261  
Red, W. A. Dryden & Son

- Beau Mercury 2439337  
Roan, Albert Hamann  
Princess Rosemary 2d 2460387  
Roan, Earl E. Stoffer

Lot 49 Female

PRINCESS ROSEMARY 10th 2953-645

RE S169

Stoffer

Red, calved June 21, 1957. Bred and owned by Earl E. Stoffer, Olsburg, Kans.

- ▶ Sni-A-Bar Random Mercury 2288967  
Roan, Sni-A-Bar Farms

*Sire*

RANDOM MERCURY 2769564  
Red, Ralph D. & James M. Collier

- ▶ E V Juanita B 2648851  
Red, Ralph D. & James Collier

- ▶ Curtiss Calypso 2d 2628358  
Red, Milton H. Nagely

*Dam*

PRINCESS ROSEMARY 6th 2790646  
Red, Earl E. Stoffer

- ▶ Princess Rosemary 4th 2624926  
Roan, Earl E. Stoffer

- Ed. Campeon Merc. 2071109  
White, Thos. E. Wilson  
Secret Belle 2110133  
Roan, Cyril H. Mumford

- Kelburn Bugler 2546511  
Dk.Rn., Richardson Stock Farms  
Juanita 11th 2351514  
Red, R. M. Collier & Son

- Curtiss Candy Calypso 2400762  
Red, Curtiss Candy Company  
Blythesome 77th 2437261  
Red, W. A. Dryden & Son

- Beau Mercury 2439337  
Roan, Albert Hamann  
Princess Rosemary 2d 2460387  
Roan, Earl E. Stoffer

# MID-KANSAS Shorthorn Breeders 23rd Annual Sale

Lot 50 Female

DUCHESS OF GLOSTER 68th 2953-638 RE S173

Stoffer

Red, calved June 28, 1957. Bred and owned by Earl E. Stoffer, Olsburg, Kansas.

- ▶ Sni-A-Bar Random Mercury 2288967  
Roan, Sni-A-Bar Farms

## Sire

RANDOM MERCURY 2769564  
Red, Ralph D. & James M. Collier

- ▶ E V Juanita B 2648851  
Red, Ralph D. & James Collier

- ▶ Westmorland Baronet 2127289  
Red, Chas. R. Hartsook

## Dam

GLOSTER'S AILEEN 2409392  
Red, B. B. Greever

- ▶ 62d Duchess of Gloster 2057462  
Red, B. B. Greever

Ed. Campeon Mercury 2071109  
White, Thos. E. Wilson  
Secret Belle 2110133  
Roan, Cyril H. Mumford

Kelburn Bugler 2546511  
Dk.Rn., Richardson Stock Farms  
Juanita 11th 2351514  
Red, R. M. Collier & Son

Miles of View Airman 1932655  
Red, Miles of View Farms  
Fairmead Countess 10th 1980615  
Red, Fairmead Farm

Royal Evergreen 1885536  
Roan, A. J. Marshall  
61st Duchess of Gloster 1930959  
Roan, Joe King

Lot 51 Female

MAYFLOWER LADY 26th 2953-643 RE S183

Stoffer

Red, calved July 12, 1957. Bred and owned by Earl E. Stoffer, Olsburg, Kans.

- ▶ Sni-A-Bar Random Merc. 2288967  
Sni-A-Bar Farms

## Sire

RANDOM MERCURY 2769564  
Red, Ralph D. & James M. Collier

- ▶ E V Juanita B 2648851  
Red, Ralph D. & James Collier

- ▶ Curtiss Calypso 2d 2628358  
Red, Milton H. Nagely

## Dam

MAYFLOWER LADY 18th 2800509  
Red, Earl E. Stoffer

- ▶ Mayflower Lady 5th 2533221  
Red, Earl E. Stoffer

Ed. Campeon Merc. 2071109  
White, Thos. E. Wilson  
Secret Belle 2110133  
Roan, Cyril H. Mumford

Kelburn Bugler 2546511  
Dk.Rn., Richardson Stock Farms  
Juanita 11th 2351514  
Red, R. M. Collier & Son

Curtiss Candy Calypso 2400762  
Red, Curtiss Candy Co.  
Blythesome 77th 2437261  
Red, W. A. Dryden & Son

Baron Harvester 2220761  
Red, Tomson Bros.  
Mayflower Lady 3d 2239491  
Roan, S. B. Amcoats



# SALINA, KANSAS • TUESDAY, APRIL 1, 1958

Lot 52 Female

ROYAL SAROLTA 17th 2953-650 RE S171

Stoffer

Roan, calved July 19, 1957. Bred and owned by Earl E. Stoffer, Olsburg, Kans.

- ▶ Gregg Farms Hoarfrost 2492499  
White, D. M. Gregg

## Sire

HOARFROST'S MERCURY 2718890  
Roan, H. H. Humphrey

- ▶ A L Orange Blossom 2d 2528265  
Red, Hans E. Regier

- ▶ Count Favorite 2421090  
Red, Clarence H. Ralstin

## Dam

ROYAL SAROLTA 14th 2749224  
Dk.Rn., Clarence H. Ralstin

- ▶ Royal Sarolta 3d 2200398  
Roan, Clarence H. Ralstin

Ed. Valiant Mercury 2247154  
Dk.Rn., Thos. E. Wilson  
Gregg Farms Cluny Clara 2364150  
Roan, D. M. Gregg

Ed. Royal Favorite 2163852  
Red, J. D. Allen  
Ed. Orange Blossom 48th 2126876  
Roan, Thos. E. Wilson

Ed. Dealer 1978823  
Roan, Thos. E. Wilson  
Countess 2226341  
Roan, Frank C. Mills

Div. Gold Porter 2051562  
Roan, The Allen Cattle Co.  
Fairies Lou 1886808  
Roan, Otto Streiff

Lot 53 Female

ROYAL DOROTHY 33d 2953-648 RE S177

Stoffer

Roan, calved Aug. 18, 1957. Bred and owned by Earl E. Stoffer, Olsburg, Kansas.

- ▶ Gregg Farms Climax 2639421  
White, D. M. Gregg

## Sire

BARDEE DIAMOND JIM 2857949  
Dk.Rn., Webb Dooley

- ▶ Diamond Rosewood 4th 2458348  
Red, M. D. Whimple

- ▶ Sunnyvale Mercury 2495863  
Red, Wlater A. Hunt

## Dam

ROYAL DOROTHY 22d 2651442  
Red, Clarence H. Ralstin

- ▶ Royal Dorothy 12th 2421104  
Roan, Clarence H. Ralstin

Ed. Valiant Mercury 2247154  
Dk.Rn., Thos. E. Wilson  
Village Marigold 10th 2002653  
Roan, D. M. Gregg

Goldfinder Union Jack 2264951  
Red, M. D. Whimple  
Diamond Rosewood 2d 2318093  
Roan, M. D. Whimple

Ed. Melody Merc. 2112051  
Red, Thos. E. Wilson  
Sunnyvale Augusta 1931862  
Roan, Walter A. Hunt

Ed. Dealer 1978823  
Roan, Thos. E. Wilson  
Royal Dorothy 4th 2200390  
Roan, Clarence H. Ralstin

# MID-KANSAS Shorthorn Breeders 23rd Annual Sale

Lot 54 Female

PRINCESS ROSEMARY 11th 2953-646

RE S176

Stoffer

White, calved Aug. 17, 1957. Bred and owned by Earl E. Stoffer, Olsburg, Kansas.

- ▶ Gregg Farms Hoarfrost 2492499  
White, D. M. Gregg

## *Sire*

HOARFROST'S MERCURY 2718890  
Roan, H. H. Humphrey

- ▶ A L Orange Blossom 2d 2528265  
Red, Hans E. Regier

- ▶ Beau Mercury 2439337  
Roan, A. Hamann

## *Dam*

PRINCESS ROSEMARY 4th 2624926  
Roan, Earl E. Stoffer

- ▶ Princess Rosemary 2d 2460387  
Roan, Earl E. Stoffer

Ed. Valiant Mercury 2247154  
Dk.Rn., Thos. E. Wilson  
Gregg Farms Cluny Clara 2364150  
Roan, D. M. Gregg

Ed. Royal Favorite 2163852  
Red, J. D. Allen  
Ed. Orange Blossom 48th 2126876  
Roan, Thos. E. Wilson

Ed. Modoc Merc. 2247144  
Red, Thos. E. Wilson  
Augusta's Delight 1806705  
R&W, Albert Hamann

Strathmore's Favorite 2271828  
Roan, S. B. Amcoats  
Princess Rosemary 2229871  
Dk.Rn., E. C. Lacy

Lot 55 Female

ROYAL DOROTHY 34th 2953-649

RE S184

Stoffer

Roan, calved July 25, 1957. Bred and owned by Earl E. Stoffer, Olsburg, Kansas.

- ▶ Gregg Farms Climax 2639421  
White, D. M. Gregg

## *Sire*

BARDEE DIAMOND JIM 2857949  
Dk.Rn., Webb Dooley

- ▶ Diamond Rosewood 4th 2458348  
Red, M. D. Whimple

- ▶ Sunnyvale Mercury 2495863  
Red, Walter A. Hunt

## *Dam*

ROYAL DOROTHY 28th 2797189  
Dk.Rn., Clarence H. Ralstin

- ▶ Royal Dorothy 10th 2292185  
Roan, Clarence H. Ralstin

Ed. Valiant Mercury 2247154  
Dk.Rn., Thos. E. Wilson  
Village Marigold 10th 2002653  
Roan, D. M. Gregg

Goldfinder Union Jack 2264951  
Red, M. D. Whimple  
Diamond Rosewood 2d 2318093  
Roan, M. D. Whimple

Ed. Melody Merc. 2112051  
Red, Thos. E. Wilson  
Sunnyvale Augusta 1931862  
Roan, Walter A. Hunt

Div. Gold Porter 2051562  
Roan, The Allen Cattle Co.  
Royal Lily 1966228  
White, Clarence H. Ralstin



# SALINA, KANSAS • TUESDAY, APRIL 1, 1958

Lot 56 Female

LADY LAVENDER 17th 2953-640 RE S186

Stoffer

Roan, calved Aug. 18, 1957. Bred and owned by Earl E. Stoffer, Olsburg, Kansas.

- ▶ Gregg Farms Climax 2639421  
White, D. M. Gregg

## Sire

BARDEE DIAMOND JIM 2857949  
Dk.Rn., Webb Dooley

- ▶ Diamond Rosewood 4th 2458348  
Red, M. D. Whimple

- ▶ Hoarfrost's Mercury 2718890  
Roan, H. H. Humphrey

## Dam

LADY LAVENDER 13th 2860776  
Roan, Earl E. Stoffer

- ▶ Lady Lavender 7th 2624920  
Roan, Earl E. Stoffer

- Ed. Valiant Mercury 2247154  
Dk.Rn., Thos. E. Wilson  
Village Marigold 10th 2002653  
Roan, D. M. Gregg

- Goldfinder Union Jack 2264951  
Red, M. D. Whimple  
Diamond Rosewood 2d 2318093  
Roan, M. D. Whimple

- Gregg Farms Hoarfrost 2492499  
White, D. M. Gregg  
A L Orange Blossom 2d 2528265  
Red, Hans E. Regier

- Beau Mercury 2439337  
Roan, A. Hamann  
Lady Lavender 5th 2347469  
Roan, Earl E. Stoffer

Lot 57 Female

MAYFLOWER LADY 24th 2953-642 RE S181

Stoffer

Red, calved Aug. 18, 1957. Bred and owned by Earl E. Stoffer, Olsburg, Kansas.

- ▶ Sni-A-Bar Random Mercury 2288967  
Sni-A-Bar Farms

## Sire

RANDOM MERCURY 2769564  
Red, Ralph D. & James M. Collier

- ▶ E V Juanita B 2648851  
Red, Ralph D. & James Collier

- ▶ Curtiss Calypso 2d 2628358  
Red, Milton H. Nagely

## Dam

MAYFLOWER LADY 17th 2800508  
Roan, Earl E. Stoffer

- ▶ Mayflower Lady 11th 2652703  
White, Earl E. Stoffer

- Ed. Campeon Mercury 2071109  
White, Thos. E. Wilson  
Secret Belle 211013  
Roan, Cyril H. Mumford

- Kelburn Bugler 2546511  
Dk.Rn., Richardson Stock Farm  
Juanita 11th 2351514  
Red, R. M. Collier & Son

- Curtiss Candy Calypso 2400762  
Red, Curtiss Candy Co.  
Blythesome 77th 2437261  
Red, W. A. Dryden & Son

- Beau Mercury 2439337  
Roan, A. Hamann  
Mayflower Lady 6th 2549900  
Roan, Earl E. Stoffer

Lot 58 Female

LADY BEAUTY 18th 2953-641 RE S185

Stoffer

Red, calved Aug. 21, 1957. Bred and owned by Earl E. Stoffer, Olsburg, Kans.

- ▶ Gregg Farms Climax 2639421  
White, D. M. Gregg

*Sire*

BARDEE DIAMOND JIM 2857949  
Dk.Rn., Webb Dooley

- ▶ Diamond Rosewood 4th 2458348  
Red, M. D. Whimple

- ▶ Hoarfrost's Mercury 2718890  
Roan, H. H. Humphrey

*Dam*

LADY BEAUTY 15th 2860775  
White, Earl E. Stoffer

- ▶ Lady Beauty 8th 2624919  
R&W, Earl E. Stoffer

{ Ed. Valiant Mercury 2247154  
Dk.Rn., Thos. E. Wilson  
Village Marigold 10th 2002653  
Roan, D. M. Gregg

{ Goldfinder Union Jack 2264951  
Red, M. D. Whimple  
Diamond Rosewood 2d 2318093  
Roan, M. D. Whimple

{ Gregg Farms Hoarfrost 2492499  
White, D. M. Gregg  
A L Orange Blossom 2d 2528265  
Red, Hans E. Regier

{ Beau Mercury 2439337  
Roan, Albert Hamann  
Marshal's Beauty 2371674  
Lt.Rn., Milton Nagely

Lot 59 Female

PRINCESS ROSEMARY 12th 2953-647 RE S187

Stoffer

Roan, calved Aug. 22, 1957. Bred and owned by Earl E. Stoffer, Olsburg, Kansas.

- ▶ Gregg Farms Climax 2639421  
White, D. M. Gregg

*Sire*

BARDEE DIAMOND JIM 2857949  
Dk.Rn., Webb Dooley

- ▶ Diamond Rosewood 4th 2458348  
Red, M. D. Whimple

- ▶ Hoarfrost's Mercury 2718890  
Roan, H. H. Humphrey

*Dam*

PRINCESS ROSEMARY 8th 2860785  
Roan, Earl E. Stoffer

- ▶ Princess Rosemary 6th 2790646  
Red, Earl E. Stoffer

{ Ed. Valiant Merc. 2247154  
Dk.Rn., Thos. E. Wilson  
Village Marigold 10th 2002653  
Roan, D. M. Gregg

{ Goldfinder Union Jack 2264951  
Red, M. D. Whimple  
Diamond Rosewood 2d 2318093  
Roan, M. D. Whimple

{ Gregg Farms Hoarfrost 2492499  
White, D. M. Gregg  
A L Orange Blossom 2d 2528265  
Red, Hans E. Regier

{ Curtiss Calypso 2d 2628358  
Red, Milton H. Nagely  
Princess Rosemary 4th 2624926  
Roan, Earl E. Stoffer



# CONSIGNORS INDEX

Ralph Bayles, Garrison	22
Randall Burch, Roxbury	25
Ralph & James Collier, Alta Vista	7, 28, 35, 38
Robert J. Crockett, Kinsley	9, 10, 33, 36
E. W. Davidson, Americus	13, 15
Webb Dooley, 204 Kansas Ave., Topeka	1
Dorsey Elliott, Sublette	12
R. C. Hotchkiss, Leon	14, 24, 32
McIlrath Brothers, Rt. 2, Kingman	8, 39
Milton H. Nagely, Abilene	26, 27, 29, 40, 41
E. F. Richter, Timken	2
D. A. Reusser, Rt. 2, Wellington	43, 44
J. M. Reusser, Mulvane	17, 18, 19, 20, 21, 42
Leo Schmitz, Marysville	5, 11, 46
Eldon L. Shafer, Mayetta	30
Winfield Slaven, Coolidge	23
Earl Stoffer, Olsburg	3, 4, 45, 47, 48, 49, 50, 51, 52 53, 54, 55, 56, 57, 58, 59
Wm. E. Thorne, Lancaster	16, 31, 34, 37
Sam Tittel, Bazine	6

Sponsored by

## MID-KANSAS SHORTHORN BREEDERS' ASSOCIATION

*President* - - - - - MILTON NAGELY, Abilene

*Vice President* - - - - - GLEN LACY, Miltonvale

*Secretary* - - - - - EARL STOFFER, Olsburg

**Please Bring this Catalog with You!**

YOU WILL FIND KANSAS SHORTHORNS  
IN MANY WAYS A LOT BETTER . . .  
AND THEY GIVE YOU  
MORE FOR YOUR MONEY!

**LOOK INSIDE NOW!**

